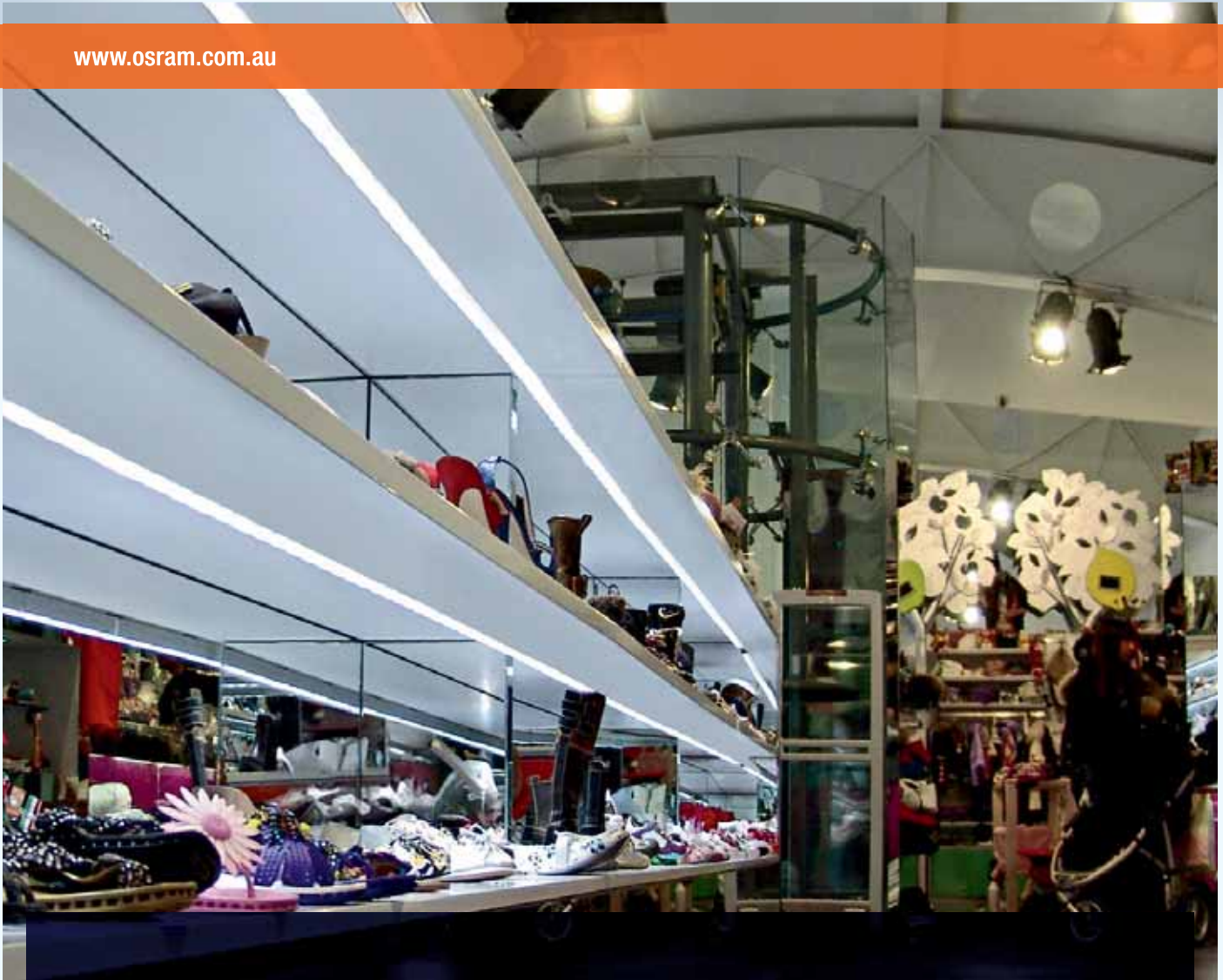


[www.osram.com.au](http://www.osram.com.au)



## Impressive highlights...

The elegantly designed LINEARlight-DRAGON® Slim.

NEW  
PLUG &  
PLAY



SEE THE WORLD IN A NEW LIGHT

**OSRAM**



# LINEARlight-DRAGON Slim... Thin profile and brilliant white light.

The LINEARlight-DRAGON Slim fixture contains 6 OSRAM Golden DRAGON® LEDs using a total of 7W and providing up to 220 lumens per fixture. This easy “Plug & Play” connection system allows for installation in display lighting applications, cove lighting, decorative and theatrical/entertainment illumination.

Each board has connectors on each end that allow for easy installation when used with the LINEARlight-DRAGON Slim connector systems. The LINEARlight-DRAGON Slim is optimised for operation on OPTOTRONIC® 24Vdc power supplies from OSRAM.



# LINEARlight-Dragon Slim






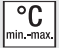

## Features and Benefits

- High power LED fixture with 6 Golden DRAGON LEDs.
- Easy "Plug & Play" connection; up to 6 modules can be connected in series to a single power supply.
- Service life up to 30,000 hours when temperature at the Tc point is maintained at 40°C (25°C ambient)
- Available in 3 colour temperatures.
- Available in 120° and 60° beam angles.
- Mounting clips and brackets for easy installation included.
- Features short circuit and overload protection.

- Operates optimally with OPTOTRONIC 24Vdc power supplies.
- Dimmable with OPTOTRONIC OT DIM by pulse width modulation (PWM)
- Dimensions (L x W x H): 300mm x 16mm x 15mm.

## Ideal Applications

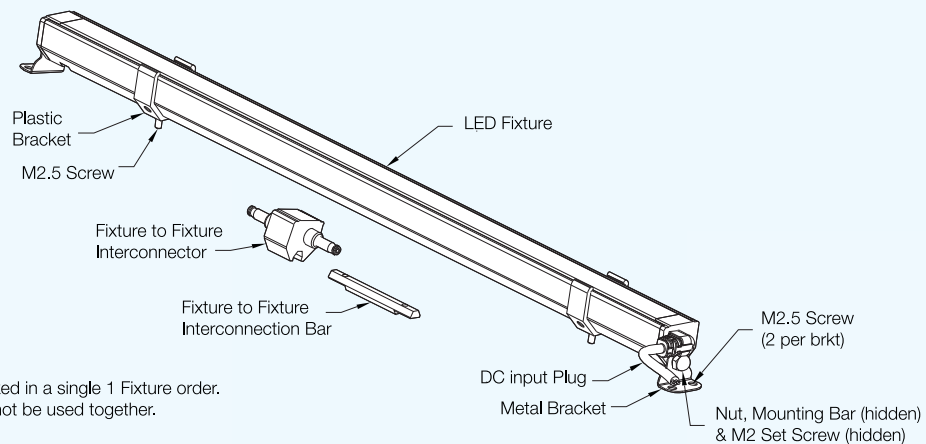
Cove Lighting, Theatrical Lighting, Wall Washing, Display Lighting, Cabinet Lighting and Fridge Lighting.

Product-reference	Product - number					
<b>LINEARlight- Dragon Slim</b>						
LD06S-W4-765	4008321 <b>297112</b>	120°	6500 K	220	-40 ... 70	-20 ... 90
LD06S-W4-765-L60	4008321 <b>297136</b>	60°	6500 K	200	-40 ... 70	-20 ... 90
LD06S-W3-741	4008321 <b>286703</b>	120°	4100 K	140	-40 ... 70	-20 ... 90
LD06S-W3-741-L60	4008321 <b>286727</b>	60°	4100 K	140	-40 ... 70	-20 ... 90
LD06S-W3-733	4008321 <b>286741</b>	120°	3300 K	120	-40 ... 70	-20 ... 90
LD06S-W3-733-L60	4008321 <b>286765</b>	60°	3300 K	120	-40 ... 70	-20 ... 90

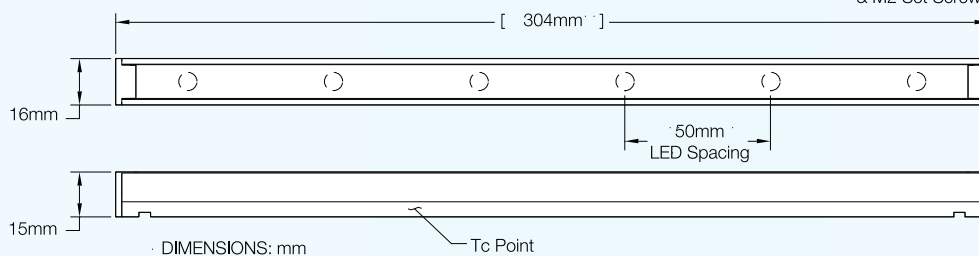
Exceeding maximum ratings for operation and storage temperature will reduce expected life time or destroy the LED module. Exceeding maximum ratings for operation voltage will cause hazardous overload and will likely destroy the LED module. The temperature of the LED module needs to be measured at the Tc-point according to EN60598-1 in a thermally constant status with a temperature sensor or a temperature sensitive label. For exact location of the Tc-point see drawing below.

Safety Information: 1) The LED module itself and all its components may not be mechanical stressed. 2) Correct electrical polarity needs to be observed. Wrong polarity may destroy the module and will result in no light emission. 3) The LED module is not waterproof.

## Assembly Diagrams



All items in the drawing are packed in a single 1 Fixture order. Plastic and Metal brackets can not be used together.

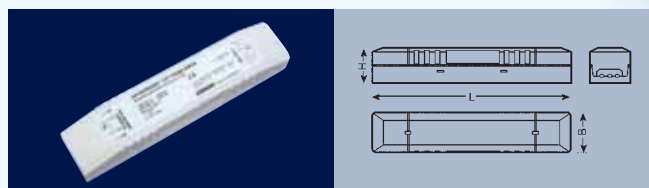


## Compatible Power Supplies



### OT 20/230-240/24

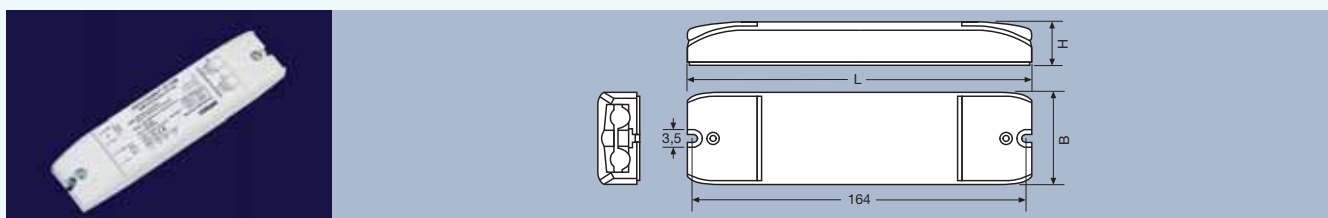
- With integrated cable clamp
- Suitable for separate installation
- Up to 2 fixtures per power supply



### OT 75/220-240/24

- With integrated cable clamp
- Suitable for separate installation
- Up to 10 fixtures per power supply

Product-reference	Product-number		V min.-max.	Hz	W MODUL	°C min.-max.	LxBxH [mm]
<b>OPTOTRONIC® control gear for LEDs for indoor applications</b>							
OT 20/230-240/24	4050300618111	24 V-LED module	207 – 254	50/60	20	-20...+45	109 x 50 x 35
OT 75/220-240/24	4050300817477	24 V-LED module	198 – 254	50/60	75	-20...+50	220 x 47 x 44



Product-reference	Product-number	V min.-max.	W MODUL		No. of CONTROL INPUTS	No. of OUTPUTS	°C min.-max.	LxBxH [mm]	
<b>OPTOTRONIC®</b>									
OT DIM	4050300943459	10 V 24 V	10 – 24	50 120	1...10V 1...10V	1 1	-20...+50	172 x 42 x 20	20
OTi DALI DIM	4008321611195	10 V 24 V	10 – 24	60 144	DALI	1 1	-20...+50	172 x 42 x 20	20

### Special features of OPTOTRONIC® controllers

- Standard actuators and also potentiometers and digital signals can be connected via the 1...10-V interface for control purposes
- Control via DALI® interface by DALI® controllers.
- Multiple LED modules can be connected in parallel on two terminal pairs
- Low power loss
- Operation in ambient temperatures of -20°C to +50 °C
- Slim low-profile casing with cable clamp for separate installation
- The controllers are suitable for both 10 V and 24 V LED systems and can therefore be used universally
- Electronically reversible cutout for short-circuits, overloads and overheating
- All the units meet the necessary standards for lighting technology; it is therefore easy for them to be integrated in luminaires